



# BILLED MEDICAID SERVICES 2012 - 2016

## MEDICAID ELIGIBILITY

- 1 Students must be eligible for Medicaid
- 2 Enrolled in an Idaho school or charter
- 3 Be under the age of 21
- 4 Have an educational disability & be on an IEP

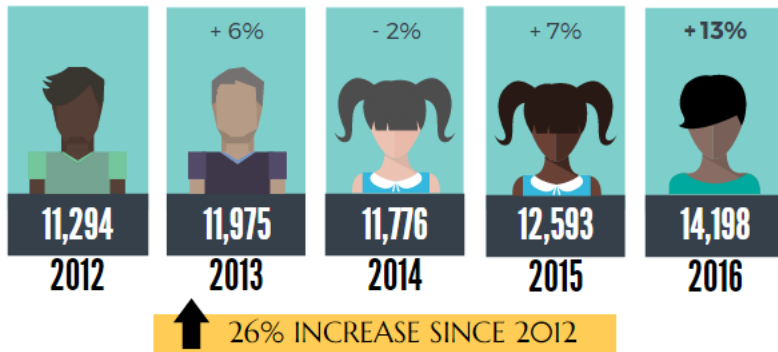
## MEDICAID = HEALTH INSURANCE

Not everyone on an IEP qualifies for Medicaid services.

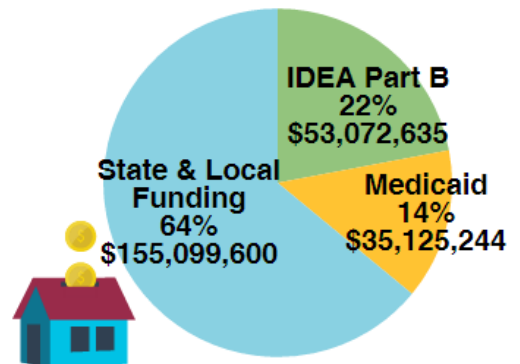


**!** 1/4 of the 29,718 students in Special Education DO NOT qualify for Medicaid

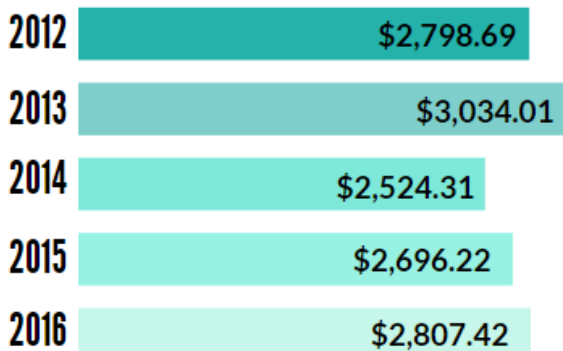
## NUMBER OF STUDENTS ACCESSING ONE OR MORE SCHOOL-BASED MEDICAID SERVICES



## FUNDING



## Average Medicaid Expenditure per Student



## NET PAYMENT IN 2016



Districts in the state of Idaho:	<b>159</b>
Districts billing Medicaid:	<b>126</b>

**79%** of Districts bill Medicaid

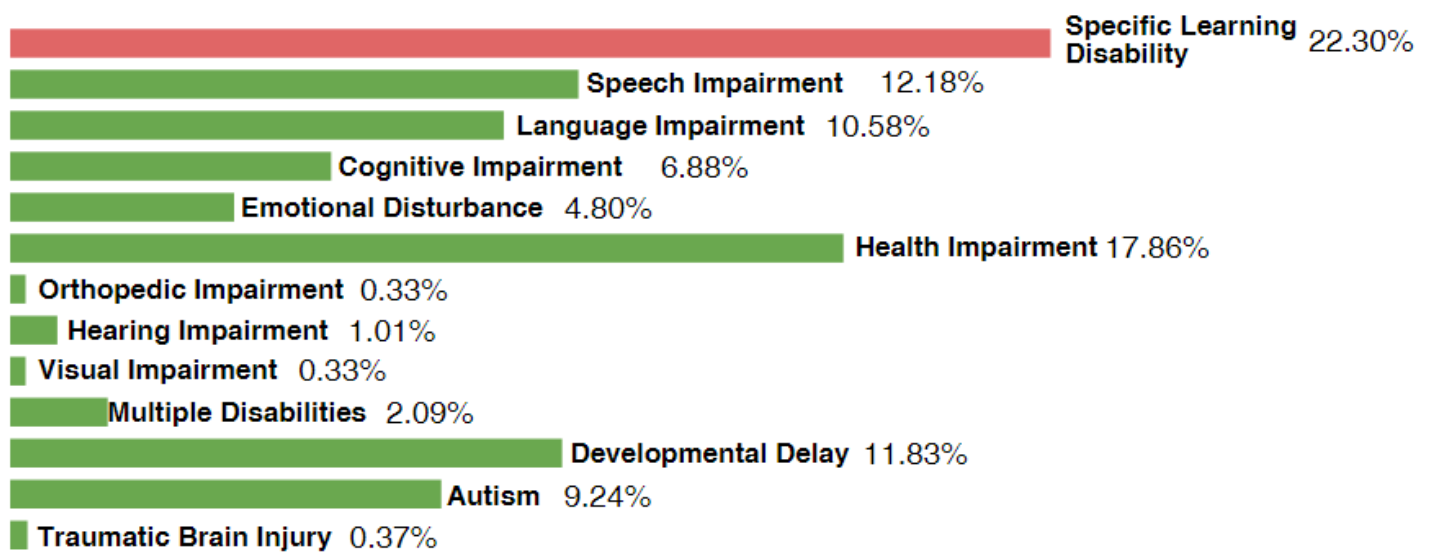


# BILLED MEDICAID SERVICES 2012 - 2016



**! The educational supports for Specific Learning Disability are NOT a Medicaid reimburseable service.**

## PERCENTAGE OF STUDENTS IN EACH IDEA ELIGIBILITY CATEGORY



## 2015-2016 SCHOOL-BASED MEDICAID STATEWIDE TRAININGS

	<p>Nursing &amp; Personal Care Mental Health Services Behavior Intervention OT, PT &amp; Speech Audiological Therapy Transportation &amp; Interpretive Services Evaluation - Assessment</p>		<p>Twin Falls Boise Coeur D'Alene Moscow</p>
	<p>Collaboration Workgroup And School-Based Committee</p>		<p>CEC Conference</p>